

# Floor Standing Steel Enclosure

## Highlights

- Conforms to DIN 41494 OR equivalent ISO Standards
- Adjustable 19" equipment mounting verticals provide the better mounting flexibility maximizing the usable mounting space
- Depth adjustable mounting slots
- Precision engineering capabilities and best efficient software configuration product technology provides the best product quality and fastest delivery in the industry



D-Link Floor Standing Steel Enclosure is designed for Servers, Networking, Data Centers, Audio Video, Telecom and Lab applications. Enclosures are fabricated out of CRCA steel, CNC programmed, punched, bended, welded and Powder coated with highest quality standards.

Configuration for standard Racks is welded frame with 4 pillars of Multi Fold profile welded to top and bottom panels. 2 Pair Depth rails to additionally support the Enclosure. Removable side panels partially vented for better air circulation. Openings/Cut outs for field cable entry from Top & Bottom of the Rack. Vented top cover with fan mounting provision, Front Glass or perforated Metal door with lock and key. Back Vented, perforated or perforated Dual metal door with lock and key. Free Floor standing Design with 4 No. castor wheels 2 no's with breaks and 2 no's without breaks. Levelers or Plinth can be provided on request.

Racks are available in 17U to 42U Variants with 650mm/800mm/1000mm deep configuration and 600 and 800 width configurations.

## Features

- Top and Bottom panel with ventilation and cable entry facility
- Provision to mount the cooling fans on the top panels
- Powder coated finish with pretreatment process meeting all industry standards
- Grounding and Bonding Options
- 100% assured compatibility with all equipment conforming to DIN 41494.
- General industrial standard for equipment

## Technical Data:

- Rack Standard:** Conforms to DIN 41494 or equivalent standard
- Construction:** Welded OR CKD (Knock Down)
- Front Door:** Lockable Toughened Glass Door,
- Rear Door:** Vented Steel Single
- Basic Frame:** Steel
- Equipment Mounting:** DIN Standard 10mm Sq. Slots / Direct M6 Tap
- Mounting Angle:** 19" Mounting angles made of formed steel
- Standard Finish:** Powder Coated
- Top and Bottom Cover:** Welded to Frame, Vented and Field Cable entry exit cut outs
- Mounting Option:** Castor wheels (Front 2 wheels with Break and rear without break) Or Levelers or Base plinth
- Standard Color:** Black or Grey
- Static Load:** 350 kgs

## Part Code & Dimensions:

Part Code	Height OD	Height Usable	Width	Usable	Depth	Usable
	In mm(H)	in U (H)	In mm(W)	Width(W)	In mm(D)	In mm(D)
<b>NFR-32U-6065-BL-SK</b>	<b>1622</b>	<b>32U</b>	<b>600</b>	<b>19"</b>	<b>650</b>	<b>570</b>

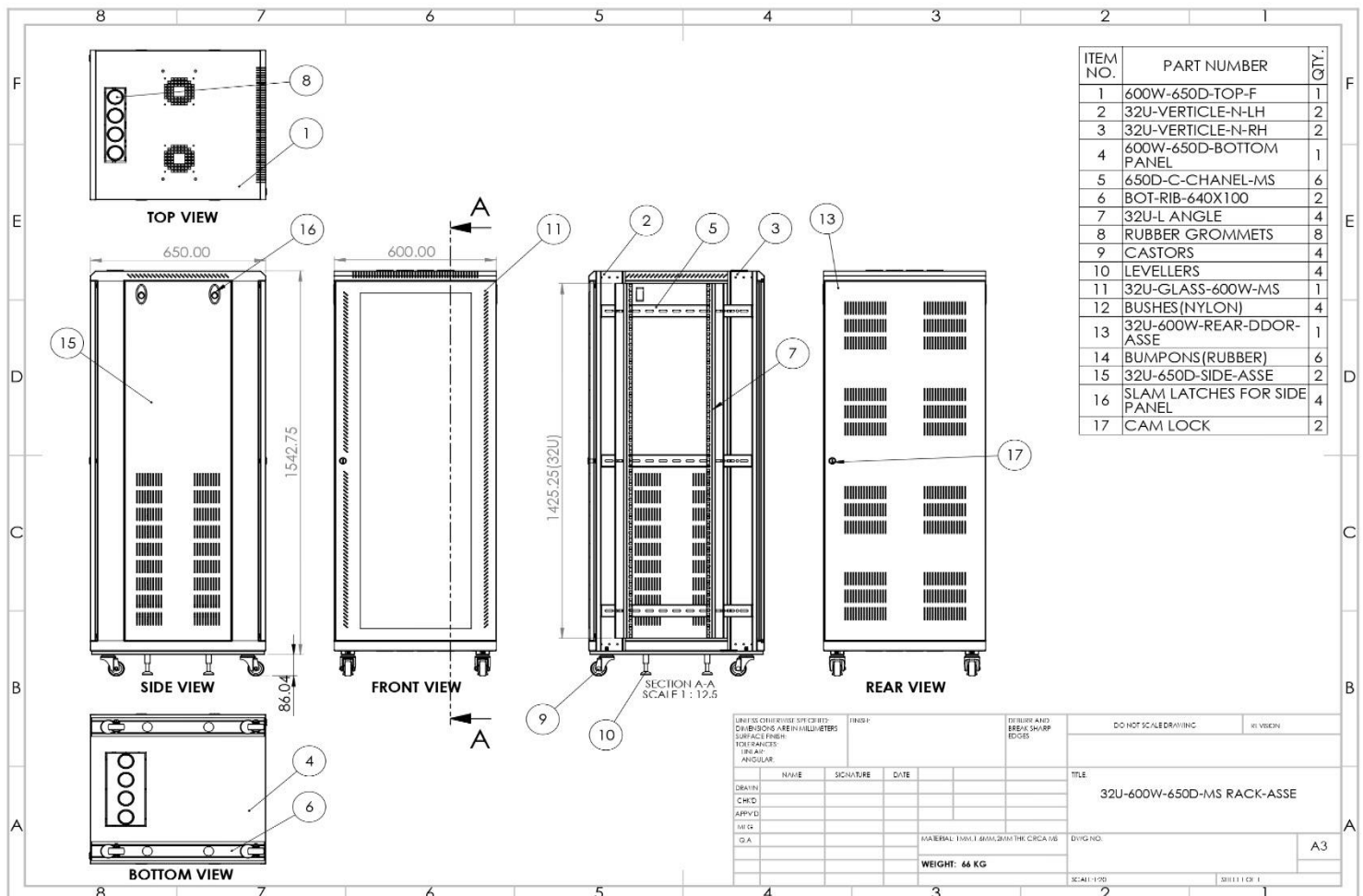
## Technical BOM:

SR	Part code	Description	UOM	Qty
		<b>Basic Rack</b>		
1	NFR-32U-6065-BL-SK	<b>32U Rack Frame-600X650-STEEL</b>	Nos	1
		Casters Set of 4	Nos	1
		Adjustable Levelers set of 4	Nos	1
		Glass Door-600-32U Front	Nos	1
		Single Vented Door-32-600	Nos	1
		Side Panels-650-32U-Vented	Nos	2
		Mounting Hardware-(Pack of 20)	set	1
		FHU with 2 FAN 360CFM	Nos	1
		Horizontal Power Distribution Unit with 6 x 5/15A sockets Round Pin, 230 Volts AC, 32 Amp with Plug	Nos	1
		Horz. Cable Manager-1U-Loop	Nos	1

\*Above enclosures are in black. Grey color is also available.

## Orderable Accessories:

- Power Distribution Units. • Cable Manager. • Fans and Fan Modules. • Casters • Jacking Feet • Sliding Shelf • Key Board Shelf • Cable Basket
- Rack Grouting Kit • Cantilever Shelf



Specifications are subject to change without notice. D-Link is a registered trademark of D-Link Corporation and its overseas subsidiaries. All other trademarks belong to their respective owners. ©2013 D-Link Corporation. All rights reserved. E&OE.

**D-Link**<sup>®</sup>  
Building Networks for People