

Pole/Wall/Base Mount Steel Enclosure

Highlights

- Conforms to DIN 41494 OR equivalent ISO Standards
- Adjustable 19" equipment mounting verticals provide the better mounting flexibility maximizing the usable mounting space
- Depth adjustable mounting slots
- Precision engineering capabilities and best efficient software configuration product technology provides the best product quality and fastest delivery in the industry



Product Summary

D-Link Outdoor Wall/Pole/Base Mount Enclosures is specially designed for Outdoor weather conditions.

Enclosures are fabricated out of Galvanized steel, CNC programmed, punched, bended, welded along with Anti corrosive powder coating for highest quality standards.

Configuration for Outdoor Enclosures

Configuration for Outdoor Racks is Welded frame integrated with side walls and down vented top cover with canopy, Fan mounting provision on the Front Door for water & dust resistance, rear side of the Enclosure having Pole/Wall mounting provision, front glass door with lock and Key provides the security.

Outdoor Pole-Wall-Base Mount Enclosures are available in 4U to 15U Variants with 400mm/450mm/500mm depths as per the customer requirements.

Width 550mm.

Features

- Conforms to IP55 Outdoor Standards
- Adjustable 19" equipment mounting verticals provide better mounting flexibility and maximizes the usable mounting space
- Depth adjustable mounting slots
- Pole mounting Provision on the Rear Side
- Top Panel with ventilation and cable entry from bottom.
- Cooling fans mounted on Front Door with Top cover for Rainwater & Dust resistance
- Powder coated finish with pretreatment process meeting all industry standards
- Grounding and Bonding Options. 100% assured compatibility with all equipment conforming to DIN 41494 (General industrial standard for equipment)

Technical Data:

Rack Standard	:	Conforms to DIN 41494 or equivalent standard
Construction	:	Welded
Front Door	:	Plain Lockable Door
Basic Frame	:	Steel
Equipment Mounting	:	DIN Standard Slots
Mounting Angle	:	19" Mounting angles made. of formed steel
Standard Finish	:	Anti-Corrosive Powder Coating
Top and Bottom Cover	:	Welded to Frame, Vented and Field Cable entry exit cut outs.
Standard Color	:	Grey
Static Load	:	40 kgs

Part Code & Dimensions:

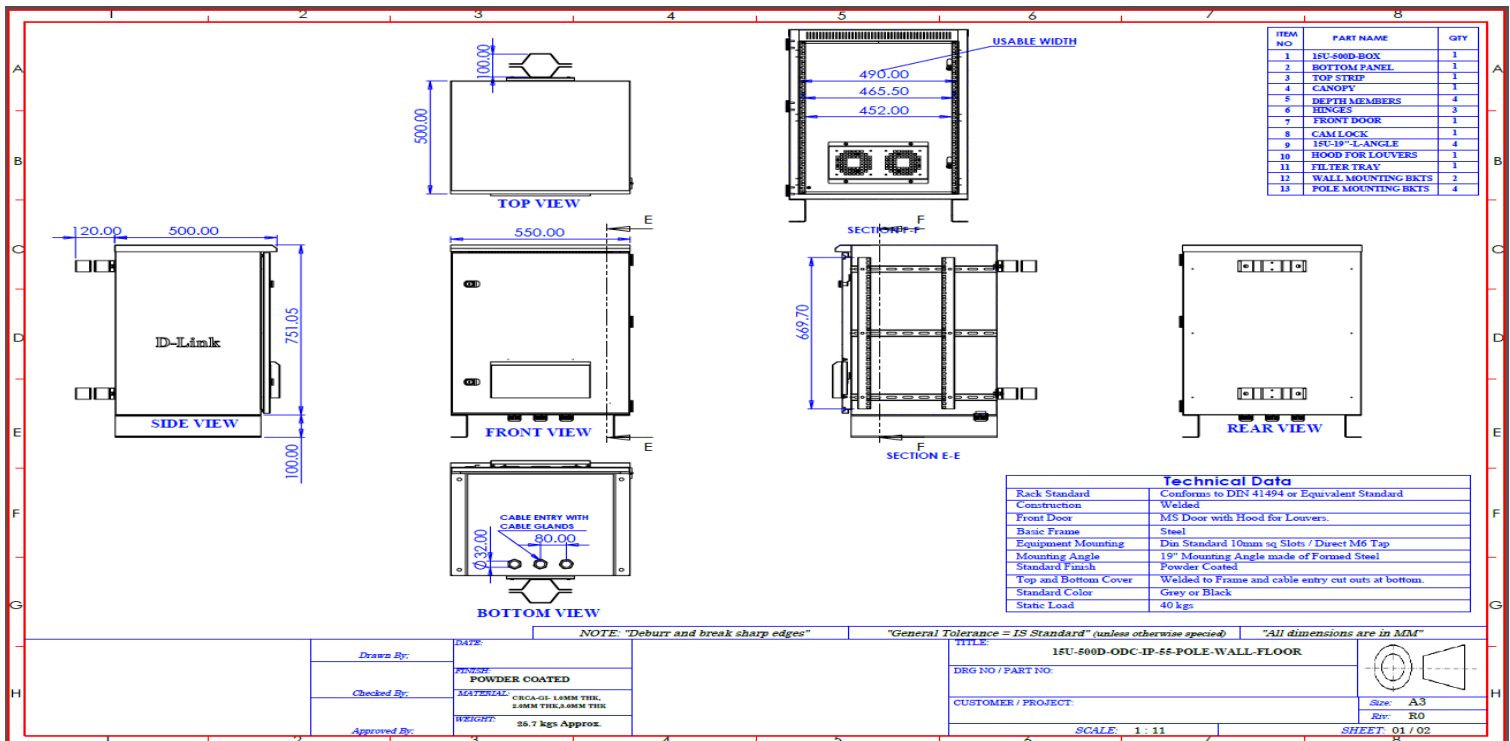
Part Code	Height OD	Height Usable	Height Usable	Width	Usable	Depth	Usable
	In mm(H)	in mm (H)	in U (H)	In mm(W)	Width(W)	In mm(D)	In mm(D)
NWR-15U-5550-GR-IP55	747	667	15U	550	19"	500	450

Technical BOM:

SR	Part code	Description
1	NWR-15U-5550-GR-IP55	<p>IP55 Outdoor Rack 15U X 550mm W X 500 mm D - Pole/Wall-Mount Rack with Optional Floor/Base-mounting provision in same Rack.</p> <p>Each rack includes: A very compact design, welded GI 1.2 to 1.5mm Construction with front accessibility The side panels are integrated type & welded with Top & bottom cover. Dual Tone Grey Color Powder Coating RAL 7035/7037 Combo Front Door with Filter, Louver & Unique key Lock 90CFM, 230V AC Fan - 2 Nos, front door Self-adhesive thermal foam from inside Door Hinges - 2 Nos Cable Glands at bottom side for cable entry 19" Angles 15U - 2 Nos for equipment mounting. Gasket (As per IP55 Standard) Wall-mounting arrangement at rear side Hood For Air Inlet at front side Powder Coated Surface Cantilever Tray 1U 250 Depth - 1 No. Horizontal Cable Manager 1U loop type - 4nos. 6 Socket 5Amp PDU - 1 No</p>

*Above enclosures are in grey color

Orderable Accessories: Power Distribution Units. • Cable Manager. • Horizontal Earthing Kit • cantilever Shelf



Specifications are subject to change without notice. D-Link is a registered trademark of D-Link Corporation and its overseas subsidiaries. All other trademarks belong to their respective owners. ©2013 D-Link Corporation. All rights reserved. E&OE.