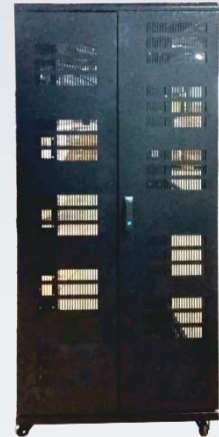


Floor Standing Steel Enclosure

Highlights

- Conforms to DIN 41494 OR equivalent ISO Standards
- Adjustable 19" equipment mounting verticals provide the better mounting flexibility maximizing the usable mounting space
- Depth adjustable mounting slots
- Precision engineering capabilities and best efficient software configuration product technology provides the best product quality and fastest delivery in the industry



D-Link Floor Standing Steel Enclosure is designed for Servers, Networking, Data Centers, Audio Video, Telecom and Lab applications. Enclosures are fabricated out of CRCA steel, CNC programmed, punched, bended, welded and Powder coated with highest quality standards.

Configuration for standard Racks is welded frame with 4 pillars of Multi Fold profile welded to top and bottom panels. 2 Pair Depth rails to additionally support the Enclosure. Removable side panels partially vented for better air circulation. Openings/Cut outs for field cable entry from Top & Bottom of the Rack. Vented top cover with fan mounting provision, Front Glass or perforated Metal door with lock and key. Back Vented, perforated or perforated Dual metal door with lock and key. Free Floor standing Design with 4 No. castor wheels 2 nos with breaks and 2 no's without breaks. Levelers or Plinth can be provided on request.

Racks are available in 17U to 42U Variants with 650mm/800mm/1000mm deep configuration and 600 and 800 width configurations.

Features:

- Top and Bottom panel with ventilation and cable entry facility
- Provision to mount the cooling fans on the top panels
- Powder coated finish with pretreatment process meeting all industry standards
- Grounding and Bonding Options
- 100% assured compatibility with all equipment conforming to DIN 41494.
- General industrial standard for equipment

Technical Data:

Rack Standard: Conforms to DIN 41494 or equivalent standard.

Construction: Welded OR CKD (Knock Down)

Front Door: Lockable Toughened Glass Door,

Rear Door: Vented Steel Dual

Basic Frame: Steel

Equipment Mounting: DIN Standard 10mm Sq. Slots / Direct M6 Tap

Mounting Angle: 19" Mounting angles made of formed steel.

Standard Finish: Powder Coated

Top and Bottom Cover: Welded to Frame, Vented and Field Cable entry exit cut outs.

Mounting Option: Castor wheels (Front 2 wheels with Break and rear without break) Or Levelers or Base plinth

Standard Color: Black or Grey

Static Load: 350 kgs

Part Code & Dimensions:

Part Code	Height OD	Height Usable	Width	Usable	Depth	Usable
	In mm(H)	in U (H)	In mm(W)	Width(W)	In mm(D)	In mm(D)
NFR-27U-8010-BL-SK	1400	27U	800	19"	1000	920

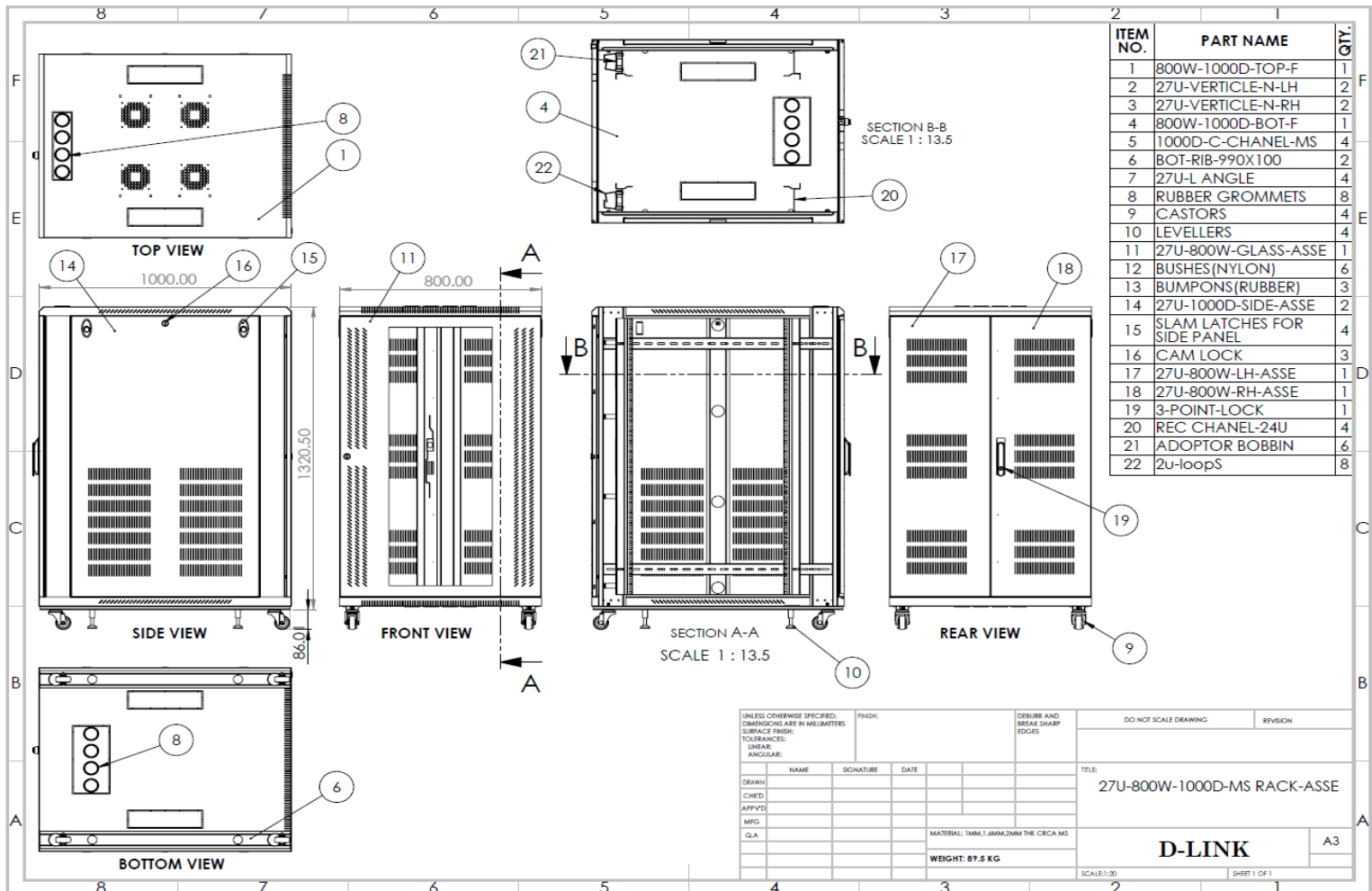
Technical BOM:

SR	Part code	Description	UOM	Qty	
		Basic Rack			
1	NFR-27U-8010-BL-SK	27U Network Enclosure Frame-800X1000-STEEL	Nos	1	
		Casters Set of 4	Nos	1	
		Adjustable Levelers set of 4	Nos	1	
		19" Reduced Channel - Loop Type	Nos	1	
		Glass Door-800-27U	Nos	1	
		Vented Rear Door-27-800	Nos	1	
		Side Panels-1000-27U-Vented (Set of 2)	Set	1	
		Horizontal Power Distribution Unit with 6 x 5/15A sockets	Nos	1	
		Round Pin, 230 Volts AC, 32 Amp with Plug			
		FHU with 2 FAN 180CFM	Nos	1	
		Horizontal. Cable Manager-1U-Loop	Nos	1	
Mounting Hardware-(Pack of 20)	Set	1			

*Above enclosures are in black. Grey color is also available.

Orderable Accessories:

• Power Distribution Units. • Cable Manager. • Fans and Fan Modules. • Casters • Jacking Feet • Sliding Shelf • Key Board Shelf • Cable Basket • Rack Grouting Kit • Shelf



Specifications are subject to change without notice. D-Link is a registered trademark of D-Link Corporation and its overseas subsidiaries. All other trademarks belong to their respective owners. ©2022D-Link Corporation. All rights reserved. E&OE.

D-Link
Building Networks for People